

The Schmidt-Curley Newsletter



Follow us!



点击这里进入

Fall 2013 vol.10



TIGER WOODS VS RORY MCILROY
泰格·伍茲 羅里·麥克羅伊

5 THE MATCH at Mission Hills

4 BRIAN CURLEY MOST POWERFUL IN ASIA

5 THE MATCH AT MISSION HILLS RORY DEFEATS TIGER IN
SHOWDOWN AT THE BLACKSTONE COURSE

8 FIRST LOOK: SUNSHINE HILLS

12 ROSE-POULTER COURSE OPENS FOR PLAY

22 COMMENTARY: REBIRTH OF THE WARM-UP AREA





Brian Curley Named #8 Most Powerful Person in Asia by Golf Inc. Magazine

As the only American on Golf Inc.'s inaugural list of the most powerful people in Asia, Brian Curley, with Partner Lee Schmidt are recognized for their extensive work in China. Most notably, Golf Inc. cites the 20 courses designed and opened at Mission Hills's two properties in Haikou & Shenzhen, China.

(Click on the link below to read the full article)

Golf Inc.



Rory McIlroy Defeats Tiger Woods By 1 in The Match At Mission Hills

In a back-and-forth match in front of an estimated 14,000 fans at the Schmidt-Curley designed Blackstone Course, Rory McIlroy held a one shot lead coming into the final hole. Both hit the fairway leaving each player a shot at reaching the par 5, 18th in two. With a delicately placed 2nd shot, Tiger Woods had left himself a chance at evening the match but watched his eagle putt continue past the hole, leaving Rory with a short birdie putt to clinch the match and his second consecutive win over Tiger Woods in China.

back9network









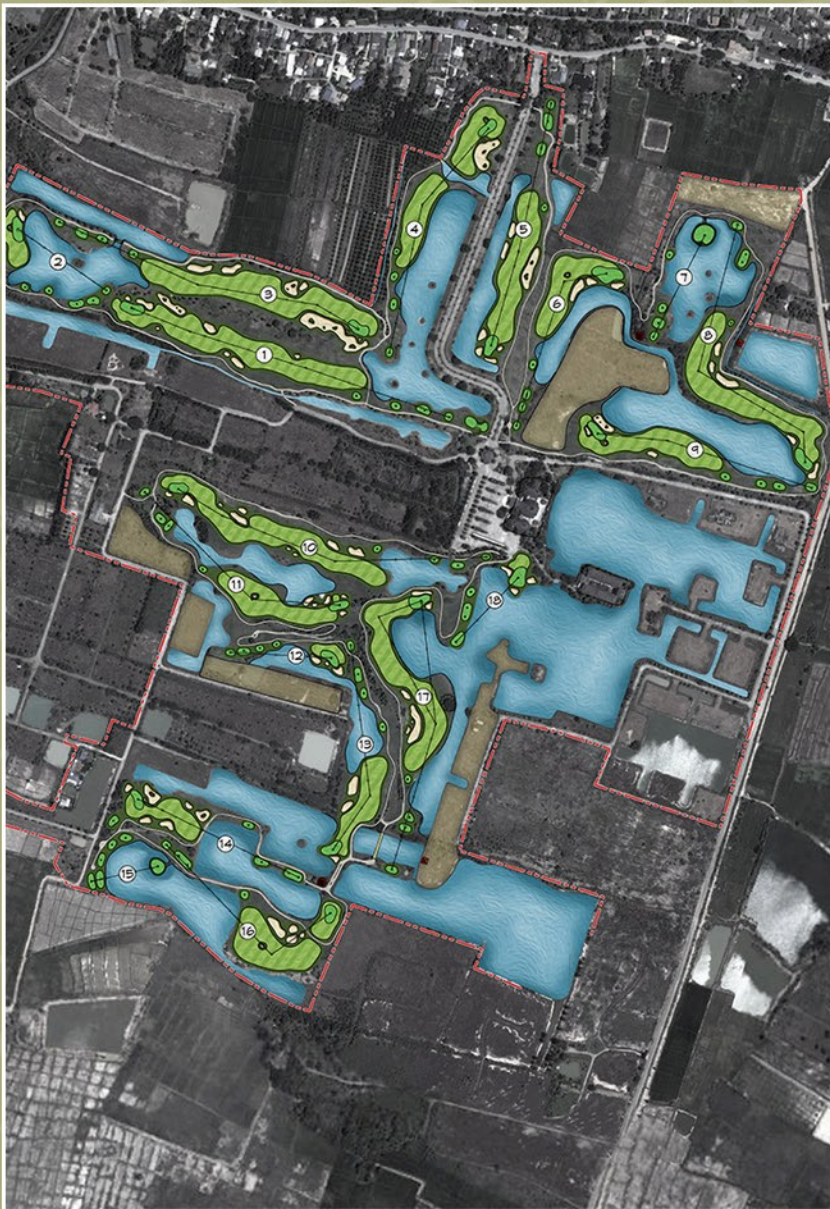
Sunshine Hills Finishes the Breathtaking Back 9 in Kunming, China

Mission Hills is looking to expand its brand into Yunnan Province with a bang. The recently completed back nine at Sunshine Hills weaves around an elevated peninsula overlooking the majestic Fuxian Lake. Numerous golf holes lay perched above dramatic cliff tops providing lake views on almost every shot resulting in world class golf holes like the Par 5 18th finisher. We look forward to finishing the front nine in the next few months with a course opening slated for 2014.

First **LOOK**







Schmidt-Curley Breaks Ground In Thailand!

Gassan Lake City Golf Club and Resort is undergoing a complete renovation by Schmidt-Curley Design. Located just outside of Chiangmai, in northern Thailand, the former rice paddy has been transformed into a +7,000 yard, Par 72 championship style layout.

While most of the existing lakes have been kept in place, the renovation includes substantial re-routing of several holes to improve overall playability and to strengthen the golf experience. 18 new green complexes are being constructed and tees will be enlarged.

Additionally, a new bunker style is being introduced to create a 'fresh look' and provide added strategy. All turf areas will be re-shaped and planted with Seashore Paspalum. The course is anticipating a re-opening in Spring/Summer of 2014.



GASSAN LAKE CITY
GOLF & RESORT

Lee Schmidt Prepares Rokko Kokusai For Japan Open in 2015

One of Japan's most storied courses, Rokko Kokusai Golf Club, has selected Schmidt-Curley to assist in preparations for the upcoming Japan Open in 2015. Located near Kobe, the East Course was originally built in 1973 and underwent a complete redesign in 1996, by Nicklaus Design (with Lee Schmidt serving as Lead Designer). Since opening, the club has continued to use Lee Schmidt in a periodic consulting role. Recent adjustments in preparation for the Open include new tees to increase overall length, strategic bunkering additions, and select tree removal.



Rose-Poulter Course Remodel Opens After Extensive Renovation

The Rose-Poulter course will now replace the Duval course as the latest addition to the stunning Mission Hills Dongguan complex, located just outside of Shenzhen, China. Set within a stunning valley of age old trees and jungle vegetation, the new addition has been designed to create exciting risk/reward opportunities on many holes and serve as a great venue for a match play format, where players are asked to take chances along the way with less regard to overall medal scoring. The course demands much more of the players skills than most courses as the angles of attack must take on dramatic bunkering, often along the center lines of play. The course evokes a natural feel with a significant amount of the bunker complexes transitioning into native vegetation, creating an integrated relationship with the outside flora and towering mountains.





#9 Tee Shot Before Rose-Poulter Course



#9 Tee Shot After Rose-Poulter Course

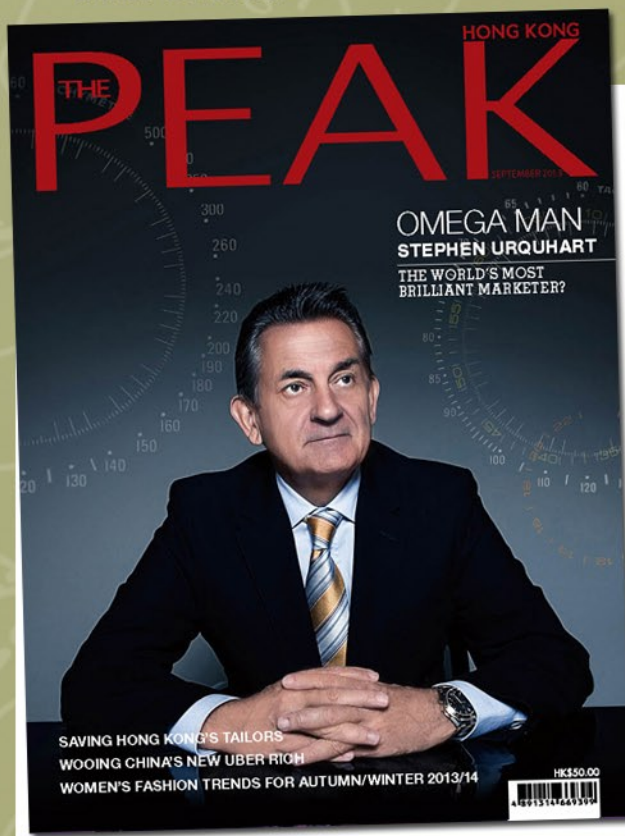


#11 Tee Shot Before Rose-Poulter Course



#11 Tee Shot After Rose-Poulter Course





Brian Curley Profiled in Hong Kong Magazine: The Peak

In the September issue of The Peak (a Hong Kong, corporate lifestyle magazine) Brian Curley answers various questions concerning his introduction to the game of golf, building two (10 course) golf resorts for Mission Hills, and discusses Schmidt-Curley's success in the China market.

(Click on the link below to read the full article)

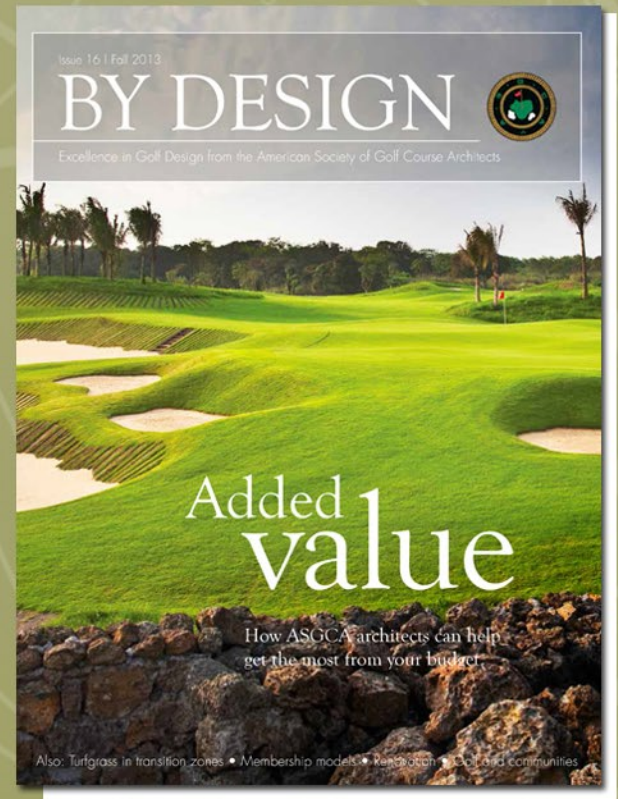
THE PEAK



Added Value: Schmidt-Curley's Stone Quarry Quarry Featured in Cover Story

The Stone Quarry Course at Mission Hills Haikou is featured on the cover of ASGCA's magazine, "By Design", a quarterly publication from the American Society of Golf Course Architects. The course, one of 10 at Mission Hills Haikou is laid out over an ancient lava field, incorporating railroad ties and steep lava rock walls which were built to collect and divert drainage water across the course. The article focuses on how Golf Architects provide value to their clients on various sites around the globe.

ASGCA.com



Southern Dunes Hosts Web.com Tour's Q-School



Ak-Chin Southern Dunes Golf Club hosted the First Stage of WEB.COM's Qualifying Tournament October 8-11.

PGA Tour's Tournament Director Steve Carman had this to say about the course: "Ak-Chin Southern Dunes Golf Club... offers a wide variety of holes with challenging shot values and different lengths and does not favor one type of player, making the players use all their clubs during the competition." He added, "The short 323-yard par-four 14th and the long 484-yard par-four eighth are both great examples of what we look for to test some the best golfers in the world."



Agile Golf & Country Club to Host China Amateur

This November, Schmidt-Curley Design's Agile Golf & Country Club will host the China Amateur Open Championship. The event was first established in 1986, and has seen winners such as Zhang Lianwei, who won the event 3 times ('89, '91, '94), Liang Wenchong ('96, '97, '98), and current world #7 LPGA tour player, Shanshan Feng, winner of the women's event in 2004, '05, '06. The Men's Champion will be invited to play in the 2014 Volvo China Open.





“Many early courses offered only a “warm-up area” that may have been just a net to send balls into, immediately in front of the player. Many prominent courses, especially links courses, still employ this practice today.”

Rebirth of the Warm-up Area Brian Curley

*Published in Asian Golf Business - March 2009

With the world economy on edge, golf is venturing into an area where customer demand will drive many issues affecting design and operation. While golf in the U.S. is on very thin ice in many markets, I remain bullish on the Asian market for numerous reasons and feel that Asian operations are much more likely to adjust as market demand changes. Operations will follow the lead of customer demand and one area where I foresee significant change is in the design of practice facilities. As the time attributed to a round of golf becomes a serious threat to the growth of the game, I predict that golfing will not only accept but gravitate to a warm-up area as opposed to full size practice areas.

The exact history of practice facilities is somewhat vague. Many renowned top 100 courses, still to this day, do not have much in the way of a practice area. The notion of a full-fledged “driving range” is a fairly recent phenomenon. Many older courses merely identified a small sliver of land, often a triangular shaped piece between two corridors as a practice area or “practice field”. Often, these were non-irrigated swaths of land with gopher holes, far from the manicured facilities seen today. In early days, the player would send his caddy out into the field to retrieve his shag bag of personal practice balls. Ben Hogan was one of the most prominent players to develop a habit of hitting practice balls and stepping off exact yardages, something that became more important as hard fast playing conditions that emphasized the ground game yielded to soft, green turf conditions that demanded precise carries through the air.

Many early courses offered only a “warm-up area” that may have been just a net to send balls into, immediately in front of the player. Many prominent courses, especially links courses, still employ this practice today.

With an emphasis (or only option) on walking, detached practice areas were accessed only by auto as the need for returning nines and the operations of a walking course trumped the need to devote prime land to practice areas. A prime example of a world-class course with a detached practice field would be Pebble Beach Golf Links.

With the golf boom of the 80's and the ties to residential communities, courses (especially membership clubs) routinely attempted to build not only better courses but bigger and better practice areas (some upwards of 20 acres). Often these were double ended and offered expansive short game areas for putting, chipping, bunkers, short mow, long rough, etc. Extensive practice became the mantra of the majority of players and golf schools became much more prominent. Practice areas then begin to emulate the courses themselves in look and presentation. We were involved with Pete Dye's Stadium Course at PGA West, a practice area with deep, steep bunkering and target greens that made Lee Trevino quip that not only was the course too tough, he couldn't even play the range!

But, two major things have happened:

- Land Values have questioned the size devoted to a range (especially with today's length).
- Golfers have less time.

It has been my observation that, especially in the Asian market, players are pressed for time and do not use the full-scale practice areas even when easily accessed. Warming up prior to a round and a good, long practice session are two different things. If done properly with nice design, netting, architecture, presentation and operations, these warmup areas can be viewed as an amenity rather than an afterthought. It also works well in multiple course facilities where a full practice area may be provided once, but each course may have its own warm-up area. In this case, those who wish to work on their game still have the option while most players are able to quickly move from the clubhouse to the first tee.

We have been involved with a couple of prime examples of scaled-back warm up areas. At Bali Hai in Las Vegas, players warm up at a Polynesian themed 8 person warm-up area with automated ball delivery. The canopied hitting bays are only some 50 yards from a net yet the players get a feel of the ball off the club face with big muscle memory. It should be noted that this is prior to \$300 round of golf. The other example of note would be at Mission Hills where, in order to make room for the Pete Dye course, we placed three new Dye holes on the Faldo practice area. A warm-up area about 150 meters deep was built into an existing valley immediately adjacent to the clubhouse. The fully netted facility has about 25 bays on artificial turf and a swath of real turf in the event of any prominent tournament where players would demand the feel of hitting off turf. The most unique feature?, below the artificial turf fairway are 150 parking spaces. The close proximity of parking and warm-up area to the clubhouse creates a very pedestrian environment that

Commentary

helps operations control the movement of golfers. While full size practice areas will continue to be in demand on certain courses, I am a firm believer that the most economically successful courses will be those nearest a strong population base. Subsequently two things come with the package, higher land values and a stronger competition for free time.

Warm-up areas can help solve both issues without significant impact on the overall golf experience. This will affect not only new construction but also the retrofitting of existing facilities where ownership may decide to replace practice areas with development on land that has seen significant increases in value. It is also a good way to deal with difficult terrain as well as limits to available land.

While it may be difficult for purists to accept, I think the stigma associated with these design solutions will come to pass and more profitable projects will result.


Brian Curley



Full Publication



Schmidt-Curley Design Inc.

Scottsdale, Arizona

8180 North Hayden RD. Suite D-200

Scottsdale, AZ 85258

Phone: 480.483.1994 • Fax: 480.483.6292

Kunming, China

Room 102 Unit 2 NO.9 Building, Chahua Yuan,

Beichen Xiaoqu, Kunming, Yunnan 650224

Phone: 898.6853.2375 • Fax: 898.6859.4526

Haikou, China

B-28B Zonglv Gongyu, 107 Binhai Dadao,

Haikou, Hainan 570311



twitter.com/schmidtcurlley



facebook.com/schmidtcurlley

Vist us online @

www.schmidt-curley.com





史密特科里新闻刊



关注我们！



点击这里进入

2013秋季刊 总第10期



31 观澜湖世界第一挑战赛

30 布莱恩 科里入选“亚洲最具影响力人物榜”

31 观澜湖世界第一挑战赛：在这场在黑石球场上演的单场对决中，麦克罗伊战胜老虎伍兹

34 先睹为快：太阳山

38 罗斯-波尔特改造球场开打

48 评论：“热身区域”的重生







布莱恩·科里在由Golf Inc.杂志评选的“亚洲高尔夫最具影响力人物榜”中名列第八位

作为Golf Inc.首次评选的“亚洲高尔夫最具影响力人物榜单”中唯一的美国人，布莱恩·科里及他的合伙人李·史密特凭借他们大量在中国的出色业绩入选。Golf Inc.着重列举了他们在海口和深圳观澜湖打造的多达20座的顶级球场。

(点击下面的链接阅读全文)

Golf Inc.



罗瑞·麦克罗伊以一杆的优势击败老虎伍兹，赢得观澜湖世界第一挑战赛

在这场于史密特科里设计的海口观澜湖黑石球场举行的一对一较量中，罗瑞·麦克罗伊带着一杆的领先优势来到收尾洞。两位球手的开球落点均不错，各自为自己创造出了两杆上果岭的机会。老虎本有很好的机会扳平比分，但却在现场观众的注视下遗憾地将自己的“老鹰推”推过了球洞。如此一来，麦克罗伊完成小鸟球锁定胜局。这也是他连续第二次在中国战胜老虎伍兹。

back9network









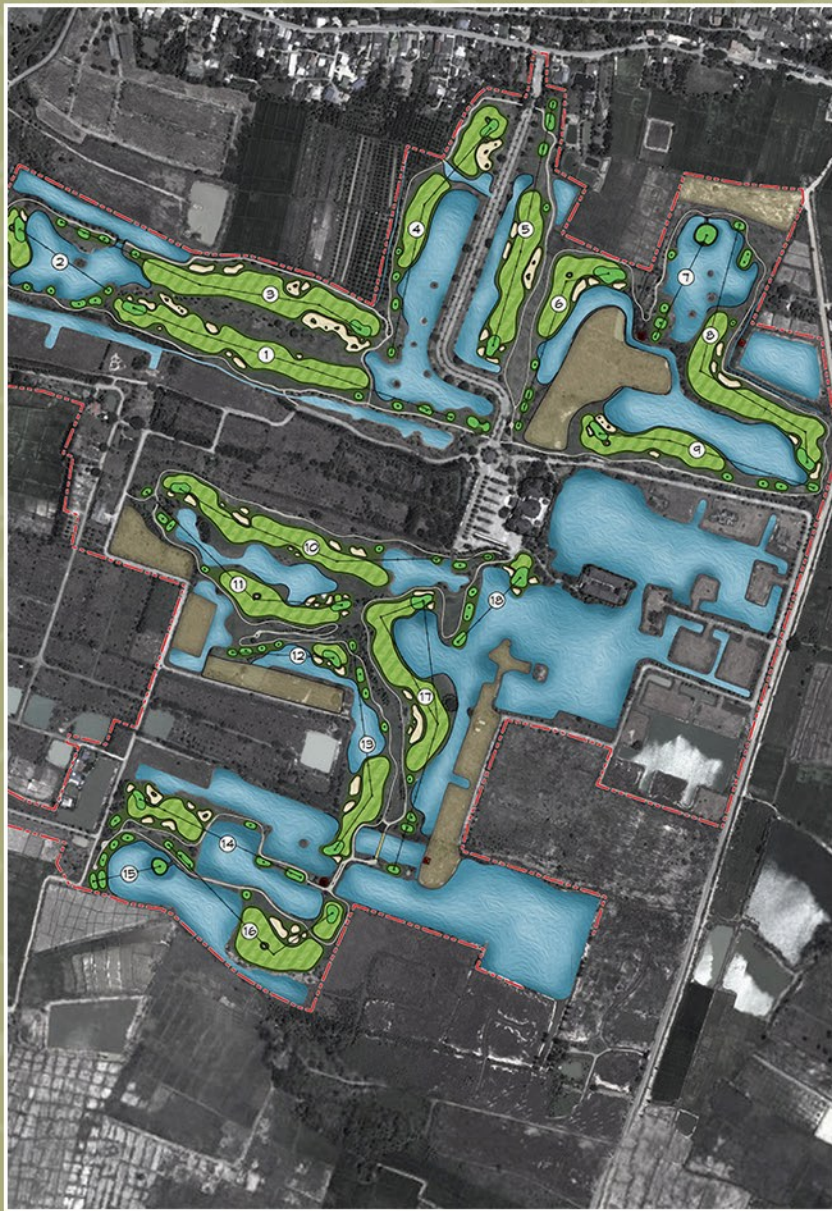
中国云南省太阳山球场完成壮观惊险的后九洞建造

观澜湖集团试图以一座惊世骇俗的球场将自己的品牌向云南省扩近。新近完成建造的太阳山球场后九洞坐落布局于一座俯瞰抚仙湖的高耸的半岛地势之上。有数个球洞均位于陡峻壮观的峭壁上端，为球场提供了很多欣赏美妙湖景的击球点。在这里不乏世界顶级的球洞，18收尾洞，标准杆5杆，即是其中的佼佼者。我们期待着在接下来的数月中完成前九洞建造，并在2014年迎来球场的开业。

先睹 为快







史密特科里再次在泰国起锚！

迦山湖城高尔夫俱乐部正由史密特科里进行一次彻底的改造工程。这座坐落于泰国北部清迈市近郊的“稻谷地”，将被改造成一座超过7000码、标准杆72杆的锦标赛型球场。

在保留大多数湖域的同时，史密特科里团队也对很多球洞的走向进行了较大的调整变动，以提升可打性、增强球场的高尔夫体验。全部18座果岭将进行重新建造，而所有的发球台都得到了扩大。此外，为了营造出一种全新的感受，同时增加球场的策略性，球场沙坑的风格得到了完全的改变。整个球场的所有草皮区域均将重新造型并播种海滨雀稗草种。球场预计于2014年春季至夏季迎来新的开业典礼。



GASSAN LAKE CITY
GOLF & RESORT

李·史密特为日本六甲国际高尔夫俱乐部准备2015年的重新开业

全日本历史最悠久的球场之一，六甲国际高尔夫俱乐部（Rokko Kokusai Golf Club），选择史密特科里团队帮助其准备2015年的重新开业。位于神户附近的东球场始建于1973年，曾于1996年由尼克劳斯设计公司（其时李·史密特正作为该公司的主设计师完成此项目）进行过彻底的重新设计。自从开业之后，该球会一直将李·史密特作为设计顾问。本次为2015年准备的重新开业，主要的球场改造工作包括增加新的发球台以增长码数、策略性地增加沙坑，以及选择性地移除一些树木。



罗斯-波尔特改造球场完工并开业

在深圳观澜湖东莞区，最新完成改造的罗斯-波尔特球场将取代原先的杜瓦尔球场，成为这座巨型度假区中的新成员。坐落于茂密的丛林峡谷地带，这座新的球场创造出了很多冒险/奖励式的球洞，鼓励球手尝试冒险进攻的策略，无需考虑总杆数，适合“比洞赛”形式的较量。沙坑、障碍和击球角度的设置极为刁钻，常常位于击球飞行线上，这使得球手必须运用比在一般球场中更多的技巧和策略。球场中有大量的过渡型沙坑，其外围一侧与周边的自然植被地貌衔接统一，使球场与周边山体、植被融为一体，给人一种置身自然之感。





9号洞 发球台视角 改造前 罗斯-波尔特球场



9号洞 发球台视角 改造后 罗斯-波尔特球场



11号洞 发球台视角 改造前 罗斯-波尔特球场



11号洞 发球台视角 改造后 罗斯-波尔特球场





布莱恩·科里接受《高尔夫人》杂志专访

“我对高尔夫的热爱，源起于在美国加州圆石滩的成长经历。我在圆石滩、赛普雷斯鲍因特、眺远山等球场均有过工作、做球童的经历，下午闲暇时便在这些球场中打球，而后穿过球场边的树林回家。其实最初我并没有想过自己将来会以高尔夫为生，但直到1976年夏天15岁的我亲历了眺远山球场后九洞的改造，当看到推土机在现场造型，施工人员向我们挥手致意时我心里暗下决心：这将是此生此世的追求，从此不会改变。”

(点击下面的链接阅读全文)

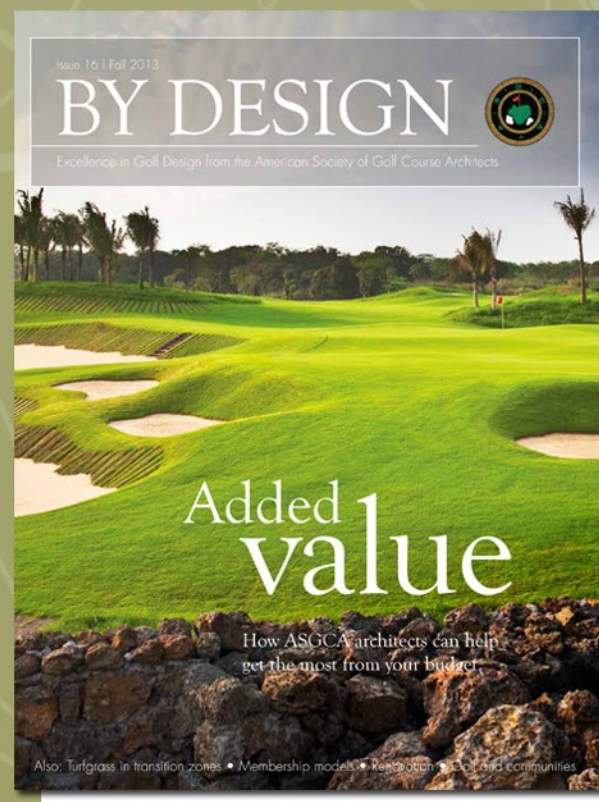
《高尔夫人》



增加的价值：史密特科里设计的Stone Quarry球场入选封面故事

海口观澜湖度假区的Stone Quarry球场被作为封面故事刊登在最新一期美国高尔夫球场设计师协会（ASGCA）杂志上。作为ASGCA的官方杂志，这份名为“By Design”的刊物每季度发行一期。作为海口观澜湖十座球场的其中之一，Stone Quarry坐落在古老的火山岩地貌之上，结合了铁轨枕木等经典元素，并建造了大量的火山岩石墙，用于收集和过滤整座球场的排水。文章的视点聚焦于这样一个问题：高尔夫球场设计师们如何在全世界形态各异的地块上打造不同风格的作品，来为客户最大化地体现地块的价值。

ASGCA.com



南方沙丘球场（Southern Dunes）举办Web.com巡回赛Q-School赛



AK Chin南方沙丘高尔夫俱乐部于2011年10月8日承办了WEB.COM's巡回赛预选赛第一阶段的比赛。PGA巡回赛执行总监Steve Carman对这座球场做出了如下评论：“AK Chin南方沙丘高尔夫俱乐部在长度、挑战度、击球价值等各个方面均为球手提供了极为宽广的多样性选择。它并不偏向于某一种风格的球手，而是鼓励球手们使用所有的球杆来进行比赛。”他还补充道，“14号323码的短四杆洞以及8号484码的长四杆洞正是我们一直在找寻的、能够挑战世界上最顶级球手的顶级球洞。”



雅居乐高尔夫乡村俱乐部承办中国业余公开赛

今年11月，史密特科里设计球场雅居乐高尔夫乡村俱乐部将承办中国业余公开赛。这项赛事最初创建于1986年，历史上曾夺冠的球手包括张连伟（三次夺得冠军——1989、1991和1994）、梁文冲（1996、1997和1998），以及当今世界LPGA巡回赛排名第七、曾于2004、2005和2006年三次夺得桂冠的冯珊珊。本次赛事的男子组冠军将被邀请参加2014年沃尔沃中国公开赛。





“很多早期的球场为球手提供的‘热身区域’几乎仅仅是位于眼前不远处的一张球网，用以拦住球手的挥杆击球。世界上的很多著名球场，特别是林克斯球场，直至今日仍延续这一传统。”

热身区的重生——布莱恩 科里

* 本文曾发表于《亚洲高尔夫业》2009年3月刊

随着整个世界经济形势的烦躁不定，高尔夫设计和运营都在因顾客需求的改变而经历着不同的变革。尽管在美国，高尔夫市场已是如履薄冰，但出于多方面的原因，我仍对亚洲高尔夫市场保持乐观，并相信亚洲的高尔夫运营行业会随着顾客需求的变化而出现改变。球场的运营方式必然会追随最重要的顾客们的要求，而在我看来，最可能出现重大设计变化的将是球场的练习设施。由于打一轮球长达3、4个小时的时间对人们来说越来越变成一种奢侈，我认为全套尺寸的练习场设施将逐渐被一块较小型的“热身区”取代。

高尔夫练习场的完整历史显得有点无迹可寻。很多举世闻名的世界百佳球场，直至今日仍然没有真正意义上的“练习区域”。我们今天所熟知的五脏俱全的“高尔夫练习场”，实际上是一个历史并不长久的新兴事物。在很多老球场，供球手下场之前进行联系热身的通常只是被夹在两个球道之间的一小片（很多时候甚至是三角形）区域。很多时候，这些练习区域并不安装喷灌设施，布满鼯鼠洞，远远不及今天我们所见的人工养护平整的练习场。在早期，球手们通常需要在练完球后派自己的球童前去收集击出的高尔夫球。随着坚硬、快速的场地条件逐渐被柔软、绿草覆盖的球道所取代，弹地球技术逐渐让位于落点精确的高空击球。本·霍根成为最早养成前往练习场挥杆击球并丈量精确码数的著名球手之一。

很多早期的球场为球手提供的“热身区域”几乎仅仅是位于眼前不远处的一张球网，用以拦住球手的挥杆击球。世界上的很多著名球场，特别是林克斯球场，直至今日仍延续这一传统。

由于对球场的可步行性的强调（亦或仅将其作为一个选择），而那些较为远离球场的练习场必须借助球车才可到达。如此一来，每九洞回到会所和养护方面对中心土地的需求就胜过了练习场。球场与练习场相隔甚远的最显著实例，即是举世闻名的圆石滩林克斯球场。

随着上世纪80年代高尔夫行业的繁荣，以及高尔夫开发与地产社区建设的相结合，很多球场（特别是会员制俱乐部）得以不仅建造更高质量的球场，同时还有更大面积、更优配套设施的练习场（有些甚至达到120亩以上）。很多时候，这些练习场设施的规模都远远超过了实际所需——大面积的“短距离练习区”包括了推杆果岭、切杆果岭、沙坑、模拟球道和高草区等等。大规模的练习场逐渐成为大多数球手的主要活动场所，而高尔夫学校的地位也变得越来越重要。随之，一些练习场甚至开始越来越多地复制和配备近似于真正球场的设施，大有与后者竞争之势。我本人曾参与由皮特·戴伊设计的PGA西部体育场球场的设计建造，在那里，练习场内既深且陡的沙坑，使得将球击上目标果岭都变得困难重重。李·特雷维诺曾讥讽道，不仅是球场本身难度太大，甚至连这里的练习场都无法征服！

但是，随后发生了两件至关重要的事：

1. 土地价值的增长使得人们越来越质疑将大量土地用于练习场的做法（尤其是考虑到当今动辄超过三百米的练习场长度）
2. 球手们的时间越来越宝贵

据我观察，尤其是在亚洲市场，球手们通常会迫于时间有限的压力而很少使用练习场的全部设施——即使它们距离会所很近亦是如此。在一轮打球之前稍作短暂热身，和使用并享受一套完整、舒适的练习场服务，是截然不同的两个概念。如果能够在设计布局、安全围网、建筑构造、细节环境和运营养护等各方面做到精益求精，那些无需占用过多土地和资源的热身区完全可以成为一种舒适愉悦的享受，而非仓促的补漏。这样的设置也同样适合于布有多座球场的大型度假区——有些球场可配备完整规模的练习场，而其他每座球场均配备独有的热身区。在这种情况下，球手可根据自己的需求进行选择。想要提高球技的球手可前往完整的练习场进行挥杆练习，而那些专注于下场比赛的球手则可进行短暂的热身，而后直奔主题。

我们曾参与过几个将练习场（热身区）规模缩小的案例。在位于美国拉斯维加斯的巴厘海高尔夫俱乐部，球手的热身场所仅仅是一个可容纳8人的波利尼西亚风格的自动摆球装置。带有顶棚的发球挥杆区仅有大约50码的长度，但尽管如此，球手仍可以切实地体验到大力挥杆击球的乐趣。值得注意的是，这套热身区设施是在一座单轮价格高达300美金的球场。另一个值得注意的例子是深圳观澜湖——在那里，为给皮特·戴伊球场腾出足够的空间，我们将其中的三个球洞放置在原本属于费度球场的练习场区域，而后在距离会所很近的一座山谷中建造了一座长度仅150米的练习场。这座四周均有围网环绕的练习场拥有25个人工草打位，外加一片修剪齐整的草皮真草打位用于举办赛事，因为职业球手们在参加比赛前需要

评论

体验在真草上挥杆的感受。要问这里最具特色的设置？在铺设人工草的练习场球道下，是150个停车位！停车场距离热身区和会所如此之近，为前来打球的球手们提供了一个非常适合步行体验的环境，也使球场的运营者在控制球手流动等方面显得得心应手。尽管在很多球场，完整规模的练习场仍将是不可或缺的组成部分，但我坚信，那些在经济上最为成功的球场将是位于人口密集区域附近的市郊球场。随之到来的将有两个问题——高昂的地价和球手空闲时间的缺乏。

热身区可以在绝少影响球场高尔夫体验的前提下缓解上面的两个问题。这样的结论不仅将影响未来新的高尔夫球场的施工建造，同时也为那些已建成球场的业主们提供了重新配置球场土地的选择：如果将练习场改建为地产开发区能带来巨大的盈利，何乐而不为呢？此外，对那些地形陡峻、施工困难、土地报批受阻的项目来说，这同样是值得参考的好主意。

虽然对于纯粹主义者来说可能显得难以接受，但我认为这些与设计、布局联系紧密的新理念的确即将成为现实，而随之带来的结果将是更多盈利型高尔夫项目的诞生。


布莱恩 科里



阅读完整当期杂志



史密特-科里设计公司

美国亚利桑那州，斯科茨代尔

8180 North Hayden RD. Suite D-200

Scottsdale, AZ 85258

Phone: 480.483.1994 • Fax: 480.483.6292

中国，昆明

中国云南昆明北辰中路北辰小区

茶花苑9栋2单元102室 邮编：650224

电话：898.6853.2375 • 传真：898.6859.4526

中国，海口

中国海南海口滨海大道107号

棕榈公寓B栋28-B 邮编：570311



twitter.com/schmidtcurley



facebook.com/schmidtcurley

欢迎访问我们的网站：

www.schmidt-curley.com

